

Why A Patrick Henry Fieldhouse?

Approaching 50 years of constant use, the Patrick Henry Facility confronts challenges today which were unforeseen even a decade ago. This is especially so where sports are concerned.

The School Board faces unprecedented challenges across the system to meet its academic mission, sustain facilities, and meet new demands.

Other County High School facilities serve their student athletes better than those at Patrick Henry placing Patrick Henry athletes at a competitive disadvantage-a product of evolution, not design.

Neighboring Counties' private and public investments have raised the bar to a degree which seriously threatens Patrick Henry's competitiveness.

Patrick Henry's athletic heritage demands that current future student athletes have serviceable facilities for all sport and modern weight and strength training opportunities.

What Will This Field-House Mean to Patrick Henry?

Individual Boys and Girls Varsity locker rooms- no more piggy-backing on PE locker rooms!

Storage for field sport equipment where it is used- no more rabbit-warren storage, or hauling personal equipment in car trunks!

Reduce field sport practice cancellations due to bad weather and reduce set-up/take-down for mat sports!

Provide half-time quarters and facilities for home and visiting teams.

Afford convenient and quick access to medical and training facilities.

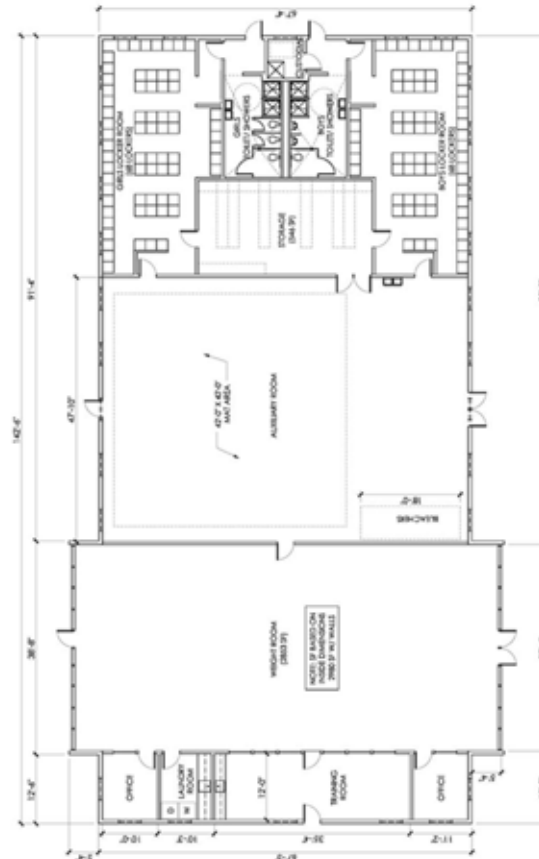
Locate field sport laundry where needed.

Afford first-class strength and weight training to all students through PE, Club, JV and Varsity sport participation.

Provide a a tangible point of Patriot Pride for Patrick Henry Field Sports.

This is What We're Building

Proposed Patrick Henry Fieldhouse: 9, 994 square feet



What Kind of Shape is Patrick Henry In Now?

Equipment Storage is spread over many storage areas.

Laundry is remote and doubles as a storage room.

The weight and strength training facilities and equipment are decades behind, fragmented, and cramped.

The locker rooms double for PE and school team use.

The locker room facilities are cramped and inadequate for personal equipment. It is common for students to store equipment in their car trunks instead.

The training room is inadequate and doubles as a storage room.

There are no practical facilities for visiting teams.

Giving Programs

A Little Bit About Our Giving Programs...

There are five giving categories which include the whole Patrick Henry Community.

Copious attributions are available, from legacy walk bricks, donor board to major feature attribution.

Tell your friends, neighbors, and friends of Patrick Henry sports about this non-profit, dedicated effort on behalf of Patrick Henry Student Athletes!

Patrick Henry Fan: \$300-\$999

Patrick Henry Sports Backer: \$1,000-\$2,499

Patrick Henry Fieldhouse Club: \$2,500-\$9,999

Patriot's Club: \$10,000-\$49,999

Champions Club: \$50,000 or above

All gifts are tax-deductible.